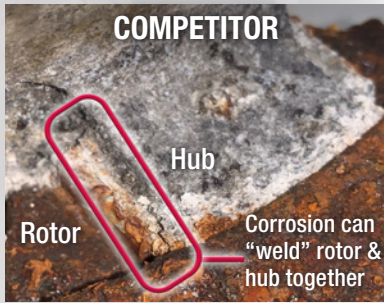


The NEW WEBB 56094PK Air Disc Brake Splined Rotor

- Patented design is only available from Webb
- Corrosion protection where you need it the most
- Up to 70% faster installation time
- Made in the USA by Webb
- US. PAT. 11,345,189

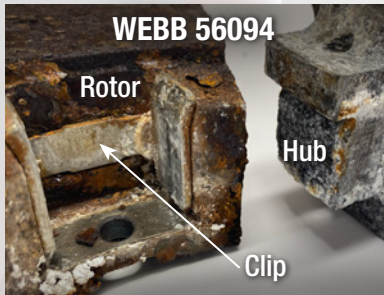
The Problem.

Corrosion buildup between the hub and rotor can “weld” these components together making it nearly impossible to separate them. It’s a mechanic’s nightmare that increases customer downtime.



The Solution.

The patented Webb 56094PK creates a barrier between the hub and rotor to reduce corrosion buildup. Your mechanics are happier, and your customers get back on the road faster.



The patented Webb design features a stainless steel clip that adds a protective barrier between the rotor and hub.

Proven Performance.

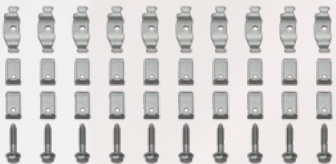
The above photos were taken after conducting **SAE J2721 Corrosion Testing** that simulates punishing “real world” corrosive conditions. After 1,300 hours of testing the competitive rotor could **COULD NOT**

be separated from the hub while the Webb 56094PK rotor **COULD!**

Less Is More.

Only 10 bolts install the 56094PK rotor to the hub, compared to 40 pieces required by our competitor. Mechanics really appreciate this time saving, hassle free design. **FAST and EASY.**
The new Webb 56094PK.

Competitor installation hardware
(40 pieces to assemble)



Webb 56094 installation hardware
(Only 10 bolts)



www.webbwheel.com

Contact your local Webb Wheel Products supplier for training that can cut your operating costs!

A Marmon | Berkshire Hathaway Company

Patented marine grade stainless steel clips are pre-installed on the rotor to streamline the installation process. Only 10 bolts are used to secure the rotor compared to the 40 pieces required by competitors.

Scan this QR code to learn more about the new Webb 56094PK splined rotor.



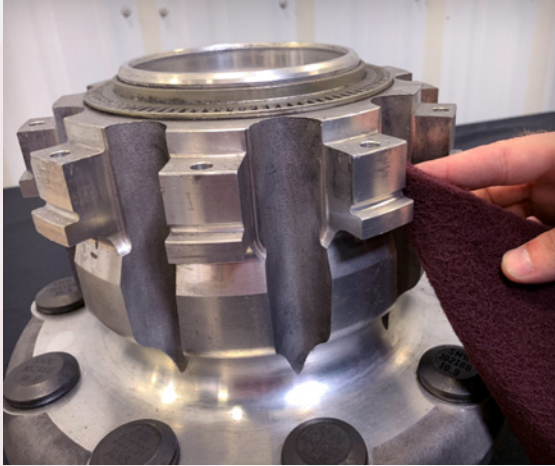
©2022 Webb Wheel Products Inc.
October 2022 • SD-139-R15



Fitting Instructions

Webb 56094PK Splined Rotor

- Up to 70% faster installation time
- Patented design only available from Webb
- Corrosion protection where you need it the most
- Made in the USA by Webb
- US. PAT. 11,345,189



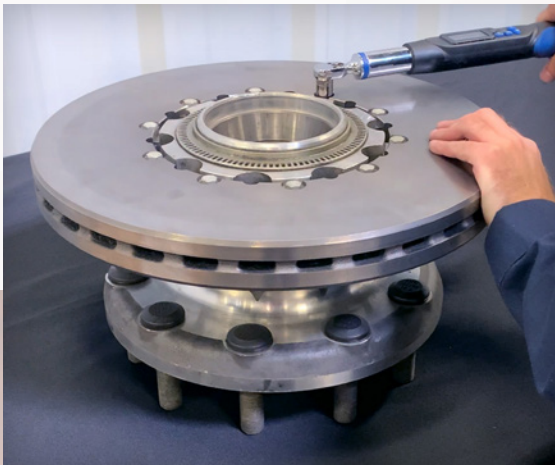
Step 1.

Before installing the new rotor, make sure the splined section of the hub is free of any dirt, corrosion, or damaged areas. If necessary, remove the ABS ring per the hub manufacturers recommendations. Set the ABS ring aside for re-installation.



Step 2.

Place the rotor into position on the hub and press firmly until the rotor flange is flush with the top of the hub splines. A rubber mallet may be used to fully seat the rotor onto the hub. **DO NOT** use the bolts to pull the rotor into place. The rotor bolts should be installed after the rotor is fully seated on the hub.



Step 3.

Hand tighten all 10 bolts. **Use a calibrated torque wrench and tighten the bolts to 22 ft-lbs. in a star pattern.** If the ABS tone ring was removed, re-install per the hub manufacturers recommendations.



www.webbwheel.com

Contact your local Webb Wheel Products supplier for training that can cut your operating costs!

A Marmon | Berkshire Hathaway Company

Scan this QR code to learn more about the new Webb 56094PK splined rotor and view a time saving Installation Video.



©2022 Webb Wheel Products Inc.
October 2022 • SD-139-R15

